

RV ELITE+ Motorhome

Exclusionary Coverage Vehicle Service Contract Program

COMPREHENSIVE Coverage

The parts included in this brochure are a partial list of the covered parts. Parts that are not covered are listed in the "Exclusions" section of the Contract.

1. Engine (Diesel/Turbocharger)

All Internally Lubricated Engine Parts including: Camshaft and Bearings; Connecting Rods and Bearings; Crankshaft and Main Bearings; Distributor Shaft and Housing; Engine Block; and Heads; Fly Wheel; Harmonic Balancer; Hydraulic and Solid Lifters; Intake and Exhaust Manifold; Intake and Exhaust Valves; Metal Valve Covers; Oil Pan; Oil Pump and Oil Pump Housing; Pistons; Piston Rings; Push Rods; Rocker Arms; Rocker Arm Shafts; Tensioners/Guides; Thematically Controlled Air Intake; Timing Belt or Chain; Timing Gears; Timing Gear Cover; Vacuum Pump; Valve Guides; Valve Springs; and Water Pump.

2. Transmission (Automatic or Manual)

All Internal Parts; Cooler and Metal Cooler Lines; Covers; Mounts; Pans and Cases; Torque Converter; and Vacuum Modulator.

3. Drive Axle (Front/Rear)

All Internally Lubricated Parts contained within the Differential Housing; Axle Shafts; Constant Velocity Joints; Differential Housing; Final Drive Housing; Hub Bearings; Supports; Transaxle Housing; Transaxle Housing and Final Drive Housing; and Universal Joints.

4. Air Conditioning

Accumulator; Blower Motor Fan; Compressor; Compressor Mounting Brackets; Clutch; Clutch Coils; Clutch Pulley; Condenser; Ducts and Outlet Hoses; Evaporator; Expansion Valve; High/Low Cut Off Switches; Idler Pulley and Bearing; Orifice Tube; Pressure Cycling Switch; Receiver-Dryer; Temperature Control Programmer and A/C Control Head.

5. Audio/Visual System

Factory Installed, or Factory Approved Dealer Installed: The following non-in dash components; Compact Disc Player; and Stereo Receiver.

6. Auxiliary Powerplant/Generator

Factory Installed, or Factory Approved Dealer Installed: All Internally Lubricated Parts of the Powerplant Engine; Cylinder Block and Head if damaged by the failure of an Internally Lubricated Part; Generator Assembly; Hour Meter; Interior Monitor/Control Panel; Inverter; PC Boards; Power Converter; Starter; Switches; and Voltage Regulator.

7. Awning Motor

Factory Installed, or Factory Approved Dealer Installed.

8. Brake System

Brake Pedal Assembly; Clips; Combination Valves; Disc Calipers; Hydraulic Control Unit; Master Cylinder; Metal Lines and Fittings; Parking Brake Linkage and Cables; Power Assist Booster; Power Brake Cylinder; Rear Actuators; Self-Adjusters; Springs and Retainers; and Wheel Cylinders.

9. Chassis Frame

Metal Only.

10. Electrical

Alternator; Back Up Alarm; Coils; Cruise Control Transducers; Dashboard Clock; Dual Battery Paralleling Switch; Distributor; Engagement Switch and Servo; Engine Wiring; Front Wiper Motors; Gauges; Harness; Horn; Horn Switches; Manually Operated Switches; Motors; Motors and Controls; Power Antenna; Power Door Locks; Relays; Remote Control Mirror Motors; Remote Control Spotlight System; Seat Motors; Solenoids; Starter; Turn Signal Switch; Voltage Regulator; Window Motors and Controls; and Window Defrosters.

11. Electronics

Control Module and Injectors; Electronic Anti-Detonation Sensors and Controller; Electronic Anti-Lock Brake System (ABS) and Relays; Electronic Driver Information Display and Module; Electronic Ignition Module; Electronic Mixture Control Unit and Sensors; and Fuel Injection Sensors.

12. Fresh Water System

Compressor; Connections and Faucets; Fittings; Traps; Water Lines; Water Pump; and Water Tank.

13. Fuel Delivery

Auxiliary Tank Switch; Fuel Distributor; Fuel Injection Pump; Fuel Injectors (Except For Contamination); Fuel Pressure; Fuel Pump; Fuel Tanks; Metal Fittings; Metal Fuel Lines; and Regulator.

14. Heating/Cooling

Coolant Recovery Unit; Electric Block Heater; Engine Thermostat; Fan; Fan Clutch; Fan Motor and Controller Module; Fan Shroud; Heater Core; Heater Ducts and Cabins; Radiator; Radiator Brackets; and Water Pump.

15. Heating System

Blower Motor; Burner Assembly; Connections and Ducts; Duct work and PC Board; Fan Motor; Fans; Fittings; Furnace Ignitor; Gas Valve; Heat Pump; Heat Strips; Thermocoupler; and Thermostat.

16. L.P. Gas/Propane System

Automatic Shut-Off System; Connections; Fittings; Gas Bottles; Gas Lines; Mounting Brackets; Pigtailed; and Regulators.

17. Power Step Coverage

Control Module and Interior Monitor/Control Panel; Power Step; and Power Step Motor.

18. Range & Oven

Burner Assembly; Burner Valves; Connections; Convection Oven; Fittings; Ignition Assembly and PC Board; Microwave Oven; Power Hood; Thermocoupler; and Thermostat.

19. Refrigerator

2 or 3-Way Cooling Unit; Burner Assembly; Connections and PC Board; Control Panel; Fittings; Ignitor; Switches; Thermocoupler; and Thermostat.

20. Seals & Gaskets

Seals and Gaskets for all covered components.

21. Slide-Out Rooms

Cables; Control Board; Gear Box; Guides; Hydraulic Lines; Hydraulic Pump; Slide Out Cylinders; Slide Out Motor; Slide Out Seals; Switches; Tracks; and Worm Gears.

22. Steering

All Internally Lubricated Parts of the Steering Gear Box; Center Link; Control Valve and Cylinder; Cooler and Metal Cooler Lines; Drag Link; Idler Arm; Main and Intermediate Steering Column; Pitman Arm; Power Steering Pump; Rack and Pinion Gear; Shafts and Couplings; Steering Damper; Tie Rod and Tie Rod Ends; and Tilt/Telescoping Steering Assembly and Gear Housing.

23. Suspension

McPherson Struts (excluding replaceable cartridge); Coil and Leaf Springs, Compressor, Kingpin and Bushing; Lines and Bags; Height Sensor; Linkage and Bushings; Rubber Suspension Systems and Air Dryer; Shafts and Bushings; Shackles and Shackle Bushings; Stabilizer Shaft; Spindle and Spindle Supports; Steering Knuckles; Strut Bar and Bushing; Torsion Bars; Upper and Lower Ball Joints; Upper and Lower Control Arms; and Wheel Bearings.

24. Waste System

Fittings and Connections; Gate Valves; Holding Tanks; Shower; Sink(s); and Toilet.

25. Water Heater

Burner Assembly Tank; Connections; Control Panel; Electronic Ignition Assembly; Fittings; Gas Valve; Heating Elements; Switches and PC Board; Thermocoupler; Thermostat; and Wiring Harness.

COACH Coverage

Includes Components 4 - 25 Only

EXPENSE REIMBURSEMENT PACKAGE

\$350 RENTAL CAR REIMBURSEMENT

Reimbursement is provided at \$50 a day for every eight hours, or portion thereof, of applicable labor time required to complete a covered repair up to a maximum of \$350.

\$300/\$500 TOWING REIMBURSEMENT

Reimbursement for towing expenses up to a maximum of \$300 while your vehicle is undergoing a covered repair. A \$500 towing option is available with surcharge paid.

\$600 TRIP INTERRUPTION

Reimbursement of up to \$200 per day up to \$600 per occurrence for lodging and meal expenses when covered repairs are required more than 100 miles from home.

24/7/365 EMERGENCY ROADSIDE ASSISTANCE

Coverage up to \$100 is provided throughout the continental United States, Alaska, Hawaii and Canada for the following services:

- Towing Assistance
- Lockout Assistant
- Battery Service
- Essential Fluids and Supplies
- Flat Tire Assistance

CONCIERGE SERVICES

A Concierge Agent is available 24/7 to assist you with all your travel needs. (Available where permitted.)

RV TECHNICAL ASSISTANCE HOTLINE

Certified RV Technicians are available to assist you with issues such as malfunctioning appliances, slide-outs, air conditioners, transmissions and other issues that require a troubleshooting expert.



WINTERIZATION COVERAGE (Optional Coverage)

The Selling Dealer will be reimbursed for up to one hour of labor and up to \$30 in parts to winterize your vehicle with surcharge paid.

\$200 ON-SITE REPAIR

In the event of a covered breakdown, we will reimburse you up to \$200 for an on-site service call.

\$100 FOOD SPOILAGE COVERAGE

Up to \$100 per Covered Repair reimbursement for the loss of food and beverages incurred due to a Covered Breakdown.

\$250 PET BENEFIT COVERAGE

Up to \$250 per Covered Repair reimbursement for pet removal, transporting, handling, and boarding expenses incurred due to a Covered Breakdown. Coverage applies to domestic pets and horses.

(Available where permitted by law.)

BENEFITS

Of Owning

Protection against rising Repair Costs[†]

	2023	2024	2025
Air Conditioner Replacement	\$2,300	\$2,490	\$2,690
Generator Replacement	\$7,426	\$8,911	\$10,396
Power Converter Replacement	\$4,478	\$5,374	\$6,269
Refrigerator Replacement	\$4,982	\$5,978	\$6,975
Slide-Out Replacement	\$4,250 - \$6,050	\$5,100 - \$7,260	\$5,950 - \$8,470
Water Heater Replacement	\$2,367	\$2,840	\$3,314

[†]Estimated average cost of repair.



FEATURES

All Plans

FULLY INSURED PROGRAM

Insured by a member company of the Nationwide® Insurance Group, rated A+ XV (Superior) by A.M. Best Company.

NATIONWIDE PROTECTION

Coverage provided throughout the continental United States, Alaska, Hawaii and Canada.

FREEDOM OF CHOICE FOR REPAIRS

You may take your vehicle to any licensed repair facility of your choice.

FAST AND FRIENDLY CLAIMS PROCESS

ASE Certified claims adjusters available to process your claim. Nationwide credit card payment for covered repairs.



TRANSFERABLE

All coverages are transferable to a subsequent private owner if you sell your vehicle. (Subject to qualification and transfer fees.)

DEDUCTIBLE OPTIONS

\$100 Standard Deductible
\$0, and Disappearing Deductible Options

Products underwritten by Nationwide Mutual Insurance Company and Affiliates. Home Office: One Nationwide Plaza, Columbus, OH. Nationwide, the Nationwide N and Eagle and Nationwide is on your side are service marks of Nationwide Mutual Insurance Company. ©2023 Nationwide.

NOTE: This is not a Contract signed by you and the contents of this brochure are limited by its size. The Contract is the **RV Elite+ Contract** and all benefits described are subject to the terms of the said Contract. **Remanufactured or used parts may be used in certain instances.** See the **RV Elite+ Contract** for complete details regarding coverages and exclusions. ***Covered Parts are dependent upon vehicle type and coverage selected.**

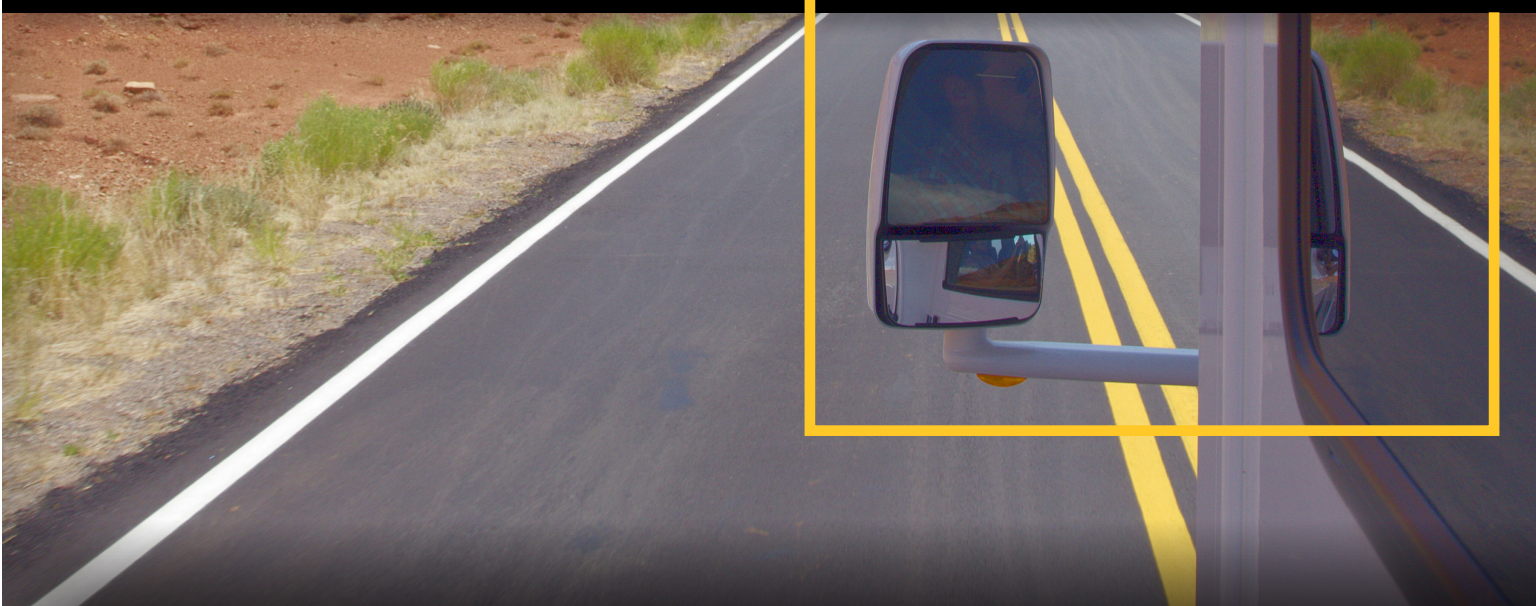
VEHICLE SERVICE CONTRACT PROGRAM



VALUE without COMPROMISE

Toll-Free (800) 297-0256

RV ELITE+ Motorhome



Administered By:
**Phoenix American
Warranty Company, Inc.**

6303 Waterford District Drive
Suite 225
Miami, FL 33126
(800) 297-0256
www.phoenixec.com

FL License #60050



Coverage is underwritten by the Nationwide® Group of companies.

9P0323